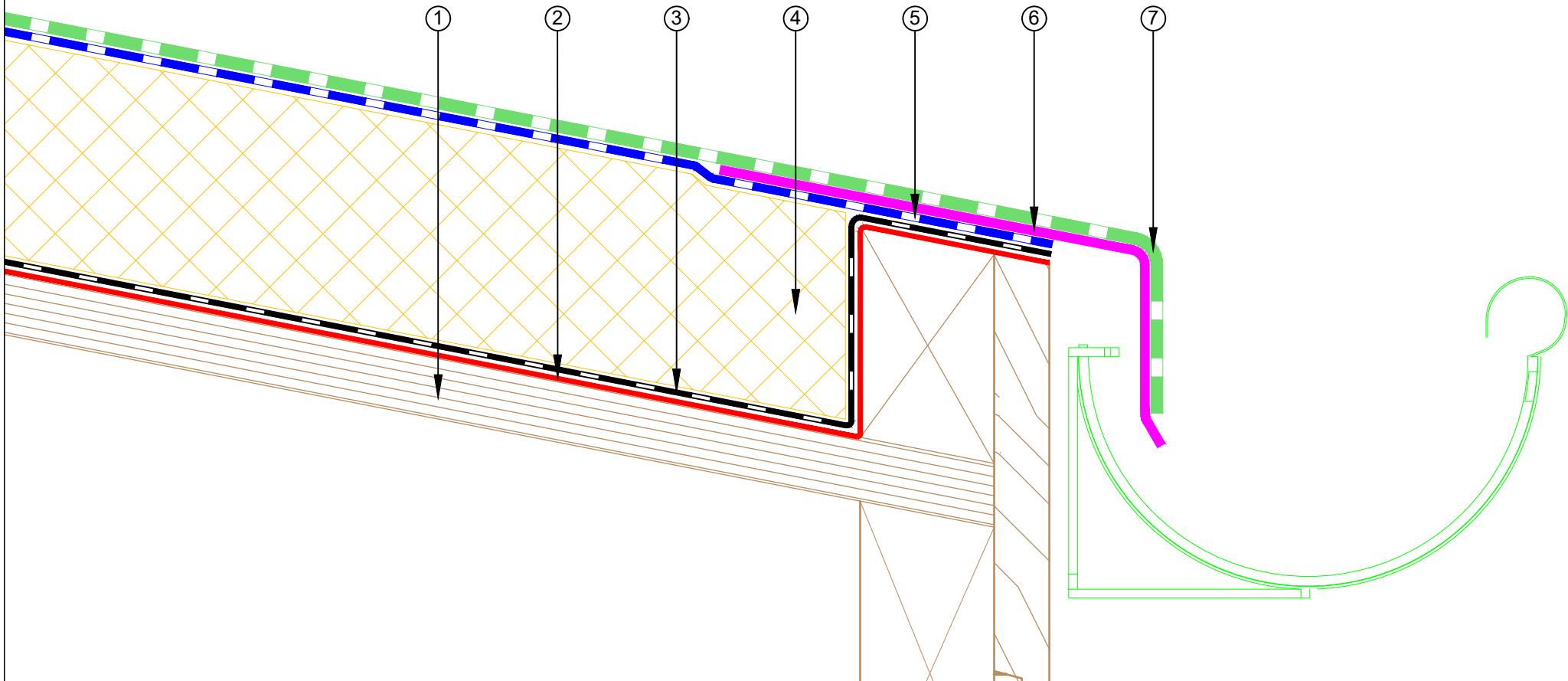


- ① Plywood Deck
- ② Equus/De Boer DuO Primer
- ③ Equus/De Boer Vapour Barrier
- ④ Equus PIR Thermal Insulation Board
- ⑤ Equus/De Boer Basesheet
- ⑥ Aluminium Flashing treated with Equus/De Boer 'Spray & Go' Primer
- ⑦ Equus/De Boer Capsheet DuO HT 4 Slates/F C180 FireCare




equus
E-mail : admin@equus.co.nz
Web : www.equus.co.nz

DuOthem Warm Roof on Plywood Connection to External Gutter

Equus/De Boer Waterproof Membrane Details are specially drawn for use by Local Authorities, Building Contractors, Equus Applicators, Architects and design professionals. All details are drawn to assist in the development of project specific details. Details may be modified where necessary to accommodate job specific requirements but must be approved by Equus Industries Ltd. All components must be supplied by Equus Industries Ltd. Equus Industries Ltd. reserves the right to alter or upgrade details at any time without prior notice.

Drawing No:	DBDTP-D14
Scale:	1:2 @ A4
Drawn by:	NKT
Date:	16/11/2017



de boer
waterproofing solutions
E-mail : info@deboer.be
Web : www.deboer.be