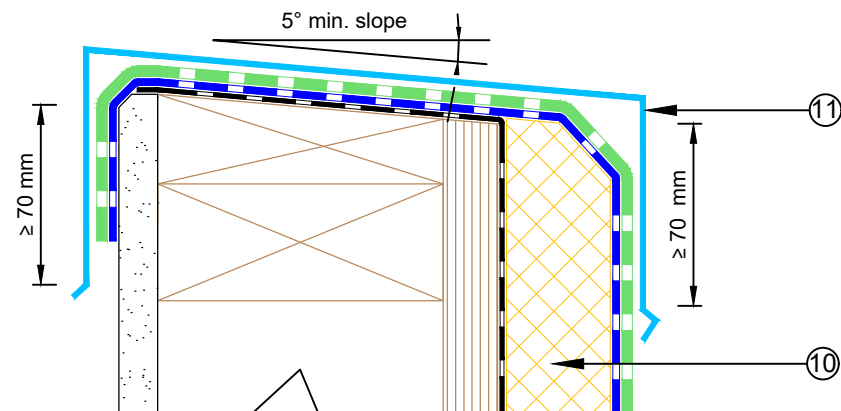
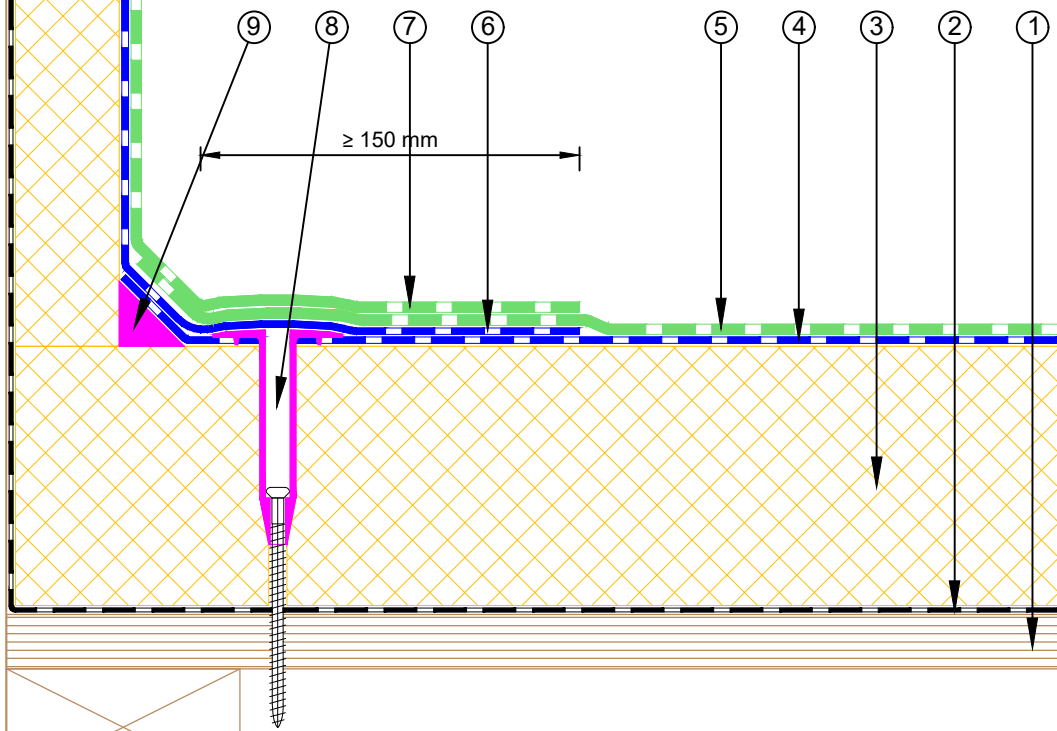


NOTE: Fastener spacing to follow De Boer project specific engineered fixing plan.



- ① Plywood Deck
- ② Equus Vapour Barrier, connected to Base sheet
- ③ Equus PIR Thermal Insulation Board
- ④ Equus/De Boer Basesheet
- ⑤ Equus/De Boer Capsheet DuO HT 4 Slates/F C180 FireCare
- ⑥ Equus/De Boer Basesheet, dressed to Parapet as separate piece
- ⑦ Equus/De Boer Capsheet, dressed to Parapet as separate piece
- ⑧ Equus/De Boer Perimeter Fastener: RBS50 Tube + S/S Screw
- ⑨ Angle Fillet
- ⑩ Equus PIR Thermal Insulation Board against Parapet
- ⑪ Cap Flashing by others




equus

E-mail : admin@equus.co.nz
Web : www.equus.co.nz

DuOtherm Warm Roof on Plywood Parapet Detail

Drawing No:	DBDTP-D1
Scale:	1:3 @ A4
Drawn by:	NKT
Date:	04/10/2017



de boer
waterproofing solutions

E-mail : info@deboer.be
Web : www.deboer.be

Equus/De Boer Waterproof Membrane Details are specially drawn for use by Local Authorities, Building Contractors, Equus Applicators, Architects and design professionals. All details are drawn to assist in the development of project specific details. Details may be modified where necessary to accommodate job specific requirements but must be approved by Equus Industries Ltd. All components must be supplied by Equus Industries Ltd. Equus Industries Ltd. reserves the right to alter or upgrade details at any time without prior notice.