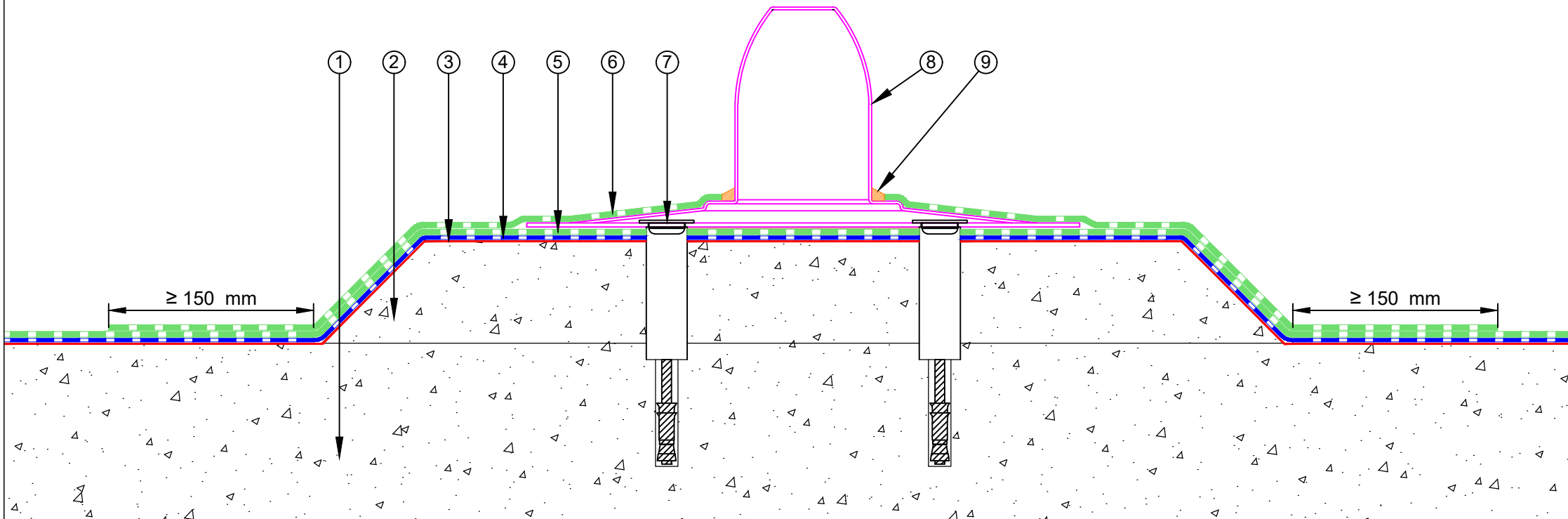


- ① Concrete Roof slab laid to fall
- ② Concrete Plinth
- ③ Equus/De Boer DuO Primer
- ④ Equus/De Boer Basesheet
- ⑤ Equus/De Boer Capsheet DuO HT 4 Slates/F C180 FireCare
- ⑥ Equus/De Boer Capsheet as separate piece over Concrete Plinth
- ⑦ Concrete Bolt for Fall Restraint Anchor
- ⑧ Fall Restraint Anchor
- ⑨ Equus/De Boer DuO Kit Sealant




equus
 E-mail : admin@equus.co.nz
 Web : www.equus.co.nz

**DuOtherm Warm Roof on Concrete
 Sala Roofsafe Fall Restraint
 Option 1**

Equus/De Boer Waterproof Membrane Details are specially drawn for use by Local Authorities, Building Contractors, Equus Applicators, Architects and design professionals. All details are drawn to assist in the development of project specific details. Details may be modified where necessary to accommodate job specific requirements but must be approved by Equus Industries Ltd. All components must be supplied by Equus Industries Ltd. Equus Industries Ltd. reserves the right to alter or upgrade details at any time without prior notice.

Drawing No:	DBCRC-D9.1
Scale:	1:4 @ A4
Drawn by:	NKT
Date:	13-Jun-2018



de boer
 4 your roof
 E-mail : info@deboer.be
 Web : www.deboer.be